



# MEDIA AND THE INNER WORLD





**Opening Symposium  
Roehampton University, London  
March 2009**



**‘An inspiring and  
exciting event!’**

**‘Such a promising start...’**

**‘Brilliantly organised!’**

**‘TERRIFIC!!!’**



# MiW Honorary Professors



Brett Kahr is a Senior Clinical Research Fellow in Psychotherapy and Mental Health at the Centre for Child Health, and a Visiting Clinician at the Tavistock Centre for Couple Relationships, at the Tavistock Institute of Medical Psychology. In addition to his work as a clinician and author, he has worked as a media psychologist for more than twenty-five years. Author or editor of six books, he has most recently published *Sex and the Psyche* (2008). He is a registered member of the British Psychoanalytic Council and Chair of the Society of Couple Psychoanalytic Psychotherapists.



# MiW Honorary Professors



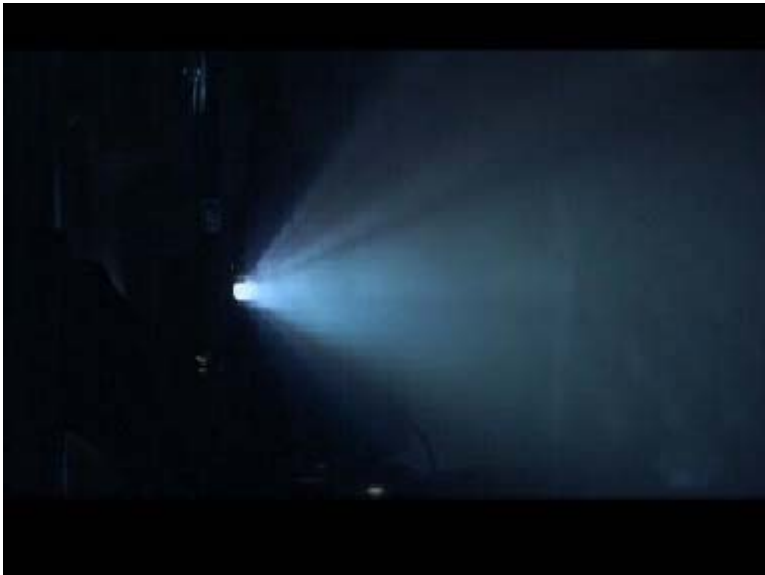
**David Aaronovitch** is a writer, broadcaster and commentator on international politics and the media. He writes for *The Times* Comment page on Tuesdays. He has previously written for *The Guardian*, *The Observer* and *The Independent*, winning numerous accolades, including Columnist of the Year 2003 and the 2001 Orwell prize for journalism. He has appeared on the satirical TV current affairs programme *Have I Got News For You* and made radio broadcasts on historical topics. He is the author of *Paddling to Jerusalem: An Aquatic Tour of Our Small Country* (2000) and *Voodoo Histories: The Role of the Conspiracy Theory in Shaping Modern History* (2009).



**The Emotional Work of Cinema**  
**The Everyman Cinema, Hampstead**  
**May 2009**

**Nicola Diamond, Claire Pajaczkowska,  
Margaret Matheson**

**EVERYMAN**



**‘A fantastic and  
stimulating Saturday  
morning!’**



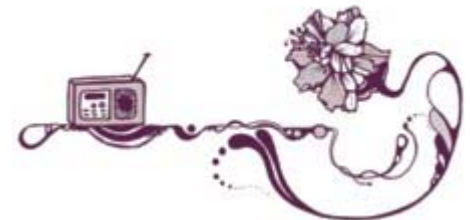
# The Reparative Spaces of Radio

## Maynard Leigh Associates

June 2009

Anita Biressi, Heather Nunn,  
Sally Weintrobe, Andy Jordan

This event triggered a whole series of new seminars in collaboration with The Radio Studies Network. The next seminar is on 30th March 2011.





**Paranoia and Television**  
**Bournemouth University, September 2009**

**Lawrence Marks, Paul Watson**  
**Hugh Ortega Breton, Karen Ainsbury**  
**Chair: Trevor Hearing**

**BOURNEMOUTH** ★  
SKILLSET SCREEN & MEDIA  
**ACADEMY**

**‘Startling and thought-  
provoking!’**

**‘I found this usefully  
disturbing...’**





**Taste, Hunger and the Media**  
**The Apollo Lounge, The Crown Tavern,**  
**London**  
**December 2009**



**Mica Nava, David Lancaster,**  
**Mary-Jayne Rust**  
**Chair: Jason Wright**

**‘A provocative and lively  
evening...’**





**Advertising, Disappointment and Desire**  
**The Institute of Practitioners in Advertising,**  
**London**  
**March 2010**

**Helen Powell, Martin Bojam, Carol Leader**  
**Chair: Iain MacRury**



**‘What an amazing venue –  
perfect for the theme of the  
event!’**

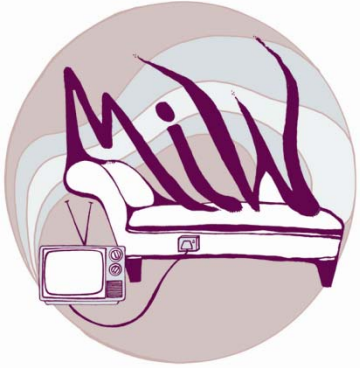


**The University as Transitional Space**  
**University of East London**  
**June 2010**

**Paul Sutton, Steven Groarke**  
**Rosalind Gill**  
**Chair: Darren Ellis**



**‘Such a high quality  
discussion about the  
purposes of university life.’**



**Comedy, Dread and Loss**  
**The Jermyn Street Theatre, London**  
**July 2010**

**Iain MacRury, Brett Kahr, Tom Davis,  
Michelle de Swarte, Dan Schreiber**  
**Chair: Estela Welldon**



**‘A barrel of laughs – ha  
ha ha!’**

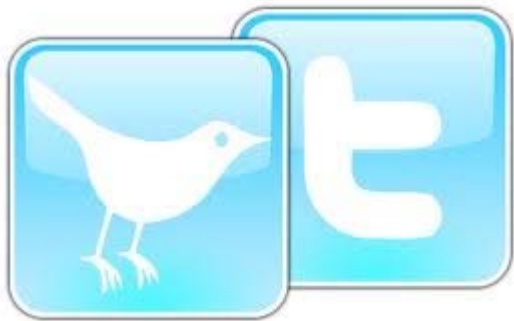




**Social Networking and Digital Narcissism**  
**PhD Research Ltd, London**  
**October 2010**

**Galit Ferguson (@grnfngs), Greg  
Stekelman (@themanwhofell), Jay Watts  
(@Shrink\_at-Large)**  
**Chair: Roger Jones**

**phd**



**‘A really challenging and exciting  
evening – the live tweeting was a  
revelation too!’**



# The Politics of Containment and Contempt

## The Frontline Club, London

### January 2011

Candida Yates, Dan Chambers,  
Gabrielle Rifkind  
Chair: David Aaronovitch



‘That was a really good line-up of speakers...’

‘The quality of the audience discussion was very high.’

## Examples of psycho-cultural research being undertaken by MiW members

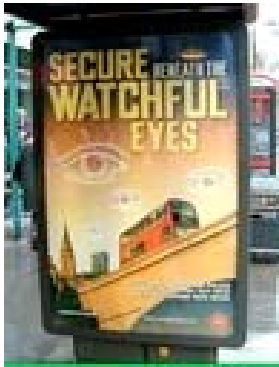


### Watching Families: Parenting, Reality Television and Popular Culture

**Dr Galit Ferguson**  
**PhD awarded by UEL 2009**

A contemporary-historical, psychoanalytically inflected study around family-help reality television programmes such as *Supernanny*, *Honey We're Killing the Kids* and *House of Tiny Tearaways*. The PhD outlines the 'affective discourses' present in such programmes and shows how these are often reactionary and always paradoxical. The programmes in question can be regarded as an anxious distillation of ideological and emotional contradictions, a remediation of parenting and family which fans the very anxieties it purports to soothe. The PhD also undertakes a study of web-audiencing to unravel the contradictory elements of the 'family-help' phenomenon and its connections with class, shame and fantasies of the split good/bad parent and child.

## Examples of psycho-cultural research being undertaken by MiW members



### **‘The Paranoid Style on British Television 1998-2007: an Object Relations Approach’**

**Dr Hugh Ortega Breton**

**PhD awarded by Roehampton University 2011**

Modern political ideologies of left and right served as significant frames of social meaning across the world during the twentieth century. The loss of these webs of meaning, with the end of the Cold War and the defeat of working class based politics, has led to a pervasive social anxiety and search for meaning that affects the whole of society, but particularly the political elite who were defined in these political terms. Uncertainty and fear with regard to a future without programmes of how to go forward is expressed through a general preoccupation with avoiding risks that may have negative outcomes. This has resulted in a coping strategy - a paranoid style - for engaging meaningfully with the electorate, based on fear and paranoid anxieties, most clearly seen in how politicians ‘respond’ and create the threat of terrorism. Using an object relations approach and taking television representations of terrorism as a case study, this analysis foregrounds the emotional dynamics of British politics and television programmes in the period 1998-2007.



## Examples of psycho-cultural research being undertaken by MiW members

**You seem preoccupied.**



**Siobhan Lennon Patience**  
**Current PhD student, UEL**

The relatively new discipline of Positive Psychology emphasises the notion of happiness in terms of ‘optimal human functioning’ and ‘emotional well being’, claiming to be the scientific study of what goes right in life. At a time of socio-cultural change and uncertainty, the certainties of positive psychology are seductive and have a significant influence on current thinking – as in David Cameron's recent announcement that the government will be measuring happiness. Yet, given this emphasis on the so-called certainties of this mode of scientific psychology, how do we ensure that complex human interactions are not reduced to statistical correlations and variables with a complete negation of the inner world? Drawing on the work of Donald Winnicott, Christopher Bollas and Thomas Ogden, this research aims to investigate whether psychoanalysis has something helpful to contribute to the study of happiness and creativity, that has recently been colonized by positive psychology.



## Examples of psycho-cultural research being undertaken by MiW members



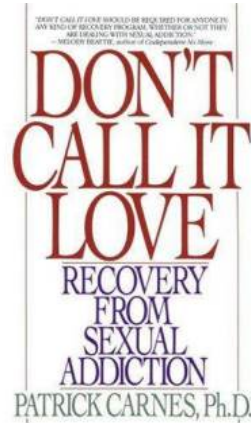
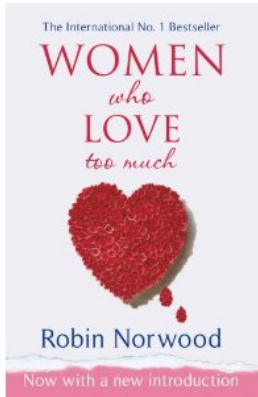
### **‘On the Couch with Makeover TV: Psychoanalytic Approaches to Reality TV, Gender and Audience’**

**Theodora Thomadakis**

**Current PhD student, Roehampton University**

This PhD analyses the development of the popular TV lifestyle modification series to explore the changing representation of identity and consumption in a cultural context. Focusing on the reality TV beauty/style makeover show *How to Look Good Naked*, it uses object relations psychoanalytic theory to analyse the representation of the makeover and transformation of the participant. A key theme is the relationship of ‘trust’ that is built up between the presenter and the female participants, and also between the presenter and the audience, through the use of language and narratives that can be regarded as ‘therapeutic’. The research asks to what extent such programmes resonate with the broader therapy culture and its focus on the importance of self-reflection and self therapy today. It also explores the views of audiences as expressed on cyber-discussion boards online.

# Examples of psycho-cultural research being undertaken by MiW members



## ‘Sex and Love Addiction and Femininity’

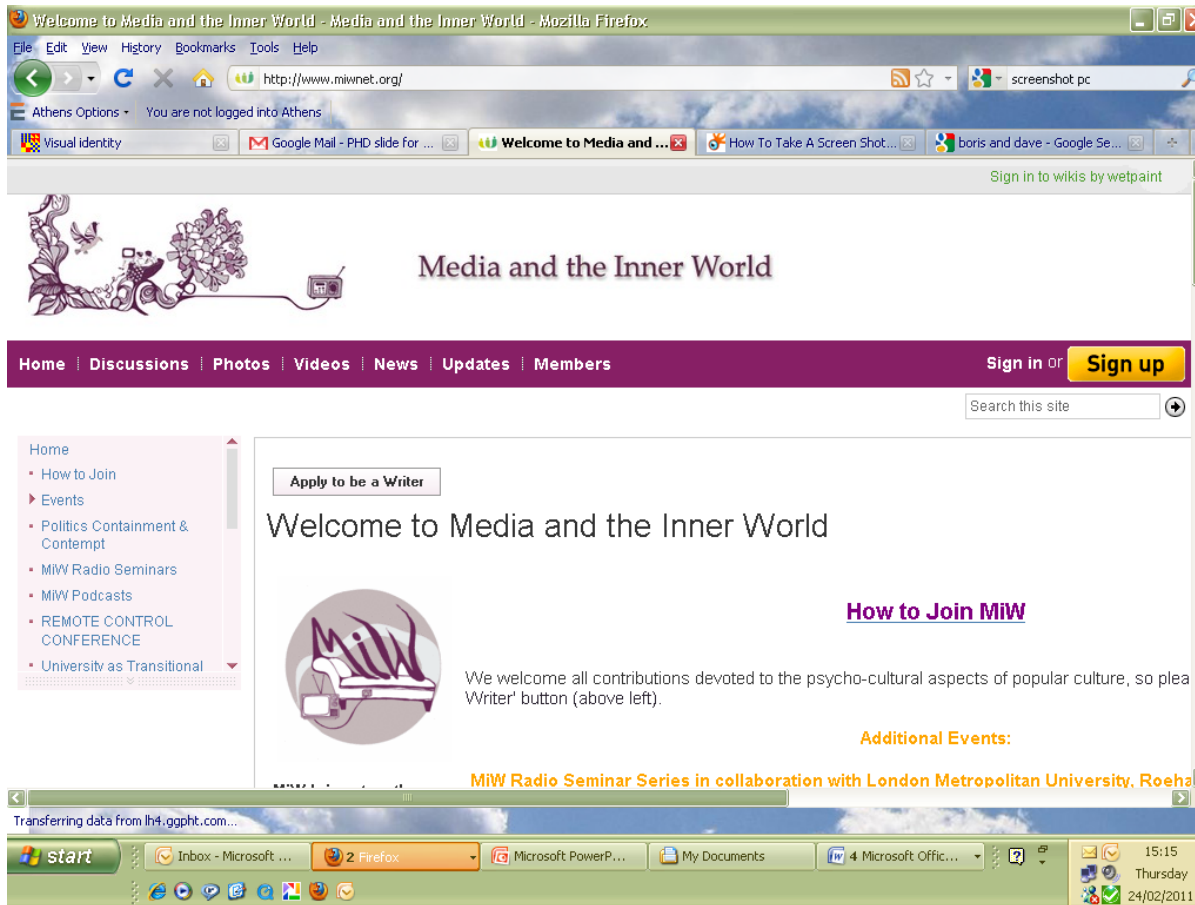
Elis Chasan

Current PhD student, UEL

This PhD explores the phenomenon of sex and love addiction in women that participate in Sex and Love Addicts Anonymous groups. The aim is to understand the social and cultural context of women’s distressed intimate relations and the unconscious forces that might be sustaining them. In order to investigate the relationships between Sex and Love Addiction and femininity, the work uses interviews and also examines a range of cultural texts to discuss the psychosocial and cultural meanings of so-called ‘sex and love addiction’, asking why in the last ten years there has been a sharp increase in women who define themselves ‘sex and love addicts’.



[www.miwnet.org](http://www.miwnet.org)



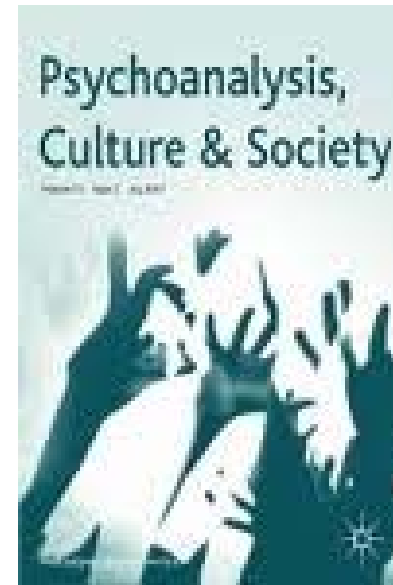
Our wikisite, [www.miwnet.org](http://www.miwnet.org) now has more than 350 members. It is not too late to join — just sign up at our url to become a member and apply to be a writer so that you can make your own contributions to the debates!



## Forthcoming from MiW



A special edition of the re-launched  
online journal, summer 2011



A special edition of  
*PCS*, summer 2012



A new monograph series – send us  
your proposals!



# Special Event: Remote Control Psychoanalysis and TV

**FREUD** MUSEUM  
LONDON

**November 2010**

In collaboration with The Freud Museum, MiW held a special symposium called ‘Remote Control: Psychoanalysis and TV’, bringing together academics, TV producers and directors, documentary participants and psychotherapists for a full day of discussion, screenings and debate. The event was fully sold out and the MiW is happy to announce that there will be an edited collection arising from this event to be published by Karnac Books in 2012/13.

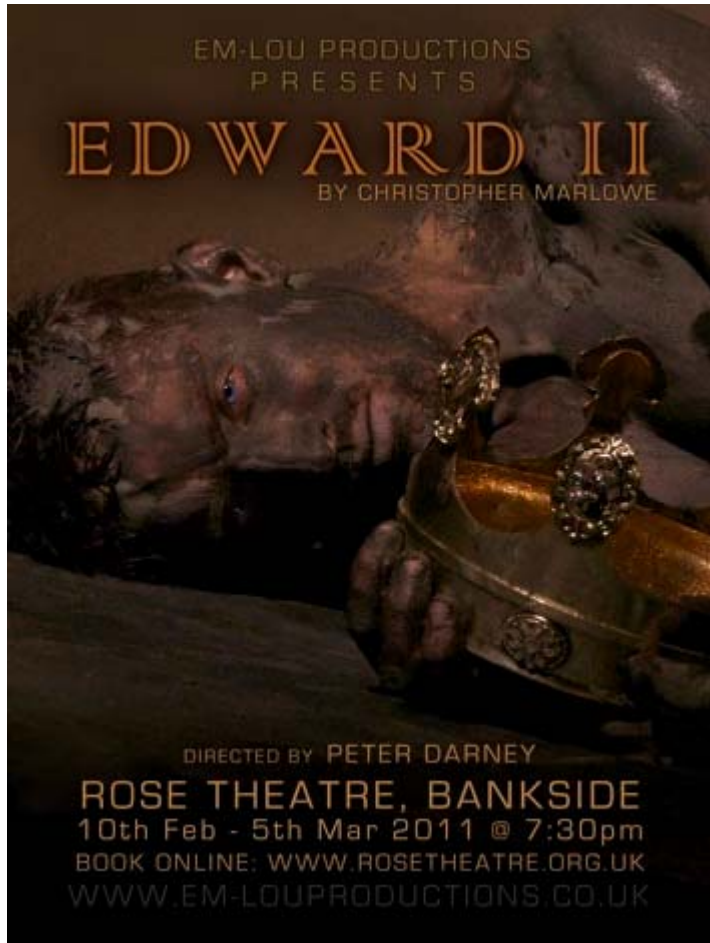




# Special Event: Murder, Masculinity and Madness in Christopher Marlowe's *Edward II*

February 2011

In collaboration with Em-Lou Productions and The Rose Theatre, Bankside, MiW held a special debate after a performance of *Edward II* at The Rose Theatre. Panellists included Candida Yates, Estela Welldon, Peter Darney and Valerie Sinason and Brett Kahr was in the Chair. The event was sold out and the debate was a great success!





# MiW Radio Seminars

Following on from the success of the MiW round table on ‘The Reparative Spaces of Radio’, we have been collaborating with Peter Lewis of The Radio Studies Network to produce three further seminars on radio and emotion.

In December 2010, Roehampton University **hosted ‘Engaging Audiences: Radio Journalism and Suffering’** with Kate Wright (former BBC journalist, lecturer at Roehampton) and Gavin Rees (of the DART Centre).

**Join us on 30<sup>th</sup> March** at London Metropolitan University for a further seminar on **‘Radio and the Voice’** with Anne Karpf (former radio critic and senior lecturer at London Met) and Aaron Balick (psychotherapist and Radio 1 Sunday Surgery presenter). Full details on our website.

The last seminar in the series will be held at **UEL in June 2011**. Further details on our website. Contact Hugh Ortega Breton for further information:

[H.Ortegabreton@surrey.ac.uk](mailto:H.Ortegabreton@surrey.ac.uk)





# Special Event: MiW at The Station



The Station is a monthly forum offering an experiential Large Group and a series of talks. It provides a space in which participants can think together about their experiences of belonging and membership; inclusion and exclusion; structure and culture; the relationship between the individual, the group and society – or whatever pre-occupations members choose to bring. Membership of the Large Group will be, at times, puzzling, anxiety provoking, challenging, stimulating and rewarding. **On May 25th Candida Yates & Caroline Bainbridge of Media and the Inner World will speak on ‘The spectacle of envy and femininity in the press’.**

**6.15 - 7.15 Talk and Discussion**

**7.15 - 7.30 Coffee/Tea**

**7.30 - 8.45 Large Group**

**Venue: Hamilton House, Mabledon Place, London, WC1H 9BD**

**Cost: £25 for waged, Low income/unwaged - pay what you can afford.**

**Under 18s free.**

**For more information contact:**

**c.scanlon@btinternet.com, jo-anne@psyctc.com, john.adlam1@btinternet.com**





## **MiW would like to express heartfelt thanks to:**

**David Aaronovitch; Nicola Carter; Peter Darney; Dr Galit Ferguson; Brett Kahr; Prof. Lynne Layton; Carol Leader; Lawrence Marks; Michael Maynard; Dr Hugh Ortega Breton; Prof. Barry Richards; Prof. Michael Rustin; Carol Seigel; Valerie Sinason; Ivan Ward; Estela Welldon; Lindsay Wells; Prof. Robert M. Young; colleagues in Psychosocial Studies at UEL and in Media, Culture and Language at Roehampton University; and everyone who has joined the Media and the Inner World research network.**

**Special thanks for all the support you have shown us and we look forward to working with you in the future.**



**MiW would like to thank  
the following companies and  
institutions:**

**Bard Entertainment; Bournemouth Skillset Screen and Media Academy; Maynard Leigh Associates; The Freud Museum; That Tavistock and Portman NHS Trust; Association of Group and Individual Psychotherapy; The Institute of Psychoanalysis; Blink Films; Five; Karnac Books; Palgrave Macmillan; Love Productions; Jermyn Street Theatre; The Rose Theatre, Bankside; John Noel Management; Em-Lou Productions; Psychotherapy Now!; Association of Independent Psychotherapists; Bournemouth University; London Metropolitan University.**

# Media and the Inner World is funded by



Arts & Humanities  
Research Council

and supported by

Roehampton  
University   
London

